

Optimal offering strategy for an aggregator across multiple products of European day-ahead market

Yogesh Pipada Sunil Kumar
University of Adelaide
Adelaide, Australia
yogeshpipada.sunilkumar,

S. Ali Pourmousavi
University of Adelaide
Adelaide, Australia
a.pourm,

Markus Wagner
University of Adelaide
Adelaide, Australia
markus.wagner@adelaide.edu.au

Jon A. R. Liisberg
Watts A/S
Svinninge, Denmark
jon.liisberg@watts.dk

Abstract—Most literature surrounding optimal bidding strategies for aggregators in European day-ahead market (DAM) considers only hourly orders. While other order types (e.g., block orders) may better represent the temporal characteristics of certain sources of flexibility (e.g., behind-the-meter flexibility), the increased combinations from these orders make it hard to develop a tractable optimization formulation. Thus, our aim in this paper is to develop a tractable optimal offering strategy for flexibility aggregators in the European DAM (a.k.a. Elspot) considering these orders. Towards this, we employ a price-based mechanism of procuring flexibility and place hourly and regular block orders in the market. We develop two mixed-integer bi-linear programs: 1) a brute force formulation for validation and 2) a novel formulation based on logical constraints. To evaluate the performance of these formulations, we proposed a generic flexibility model for an aggregated cluster of prosumers that considers the prosumers' responsiveness, inter-temporal dependencies, and seasonal and diurnal variations. The simulation results show that the proposed model significantly outperforms the brute force model in terms of computation speed. Also, we observed that using block orders has potential for profitability of an aggregator.

Index Terms—mixed integer programming, electricity market, block orders, demand side flexibility, aggregator

I. INTRODUCTION

An aggregator acts as intermediary between prosumers (consumers who can produce) and the network operators (transmission and distribution). They manage a cluster of prosumers, aggregating behind-the-meter (BTM) flexibility from them to provide grid-scale ancillary services (voltage/frequency) to system operators. The operation of this entity provides the following benefits: 1) Increased utilization and ease of management of behind-the-meter (BTM) distributed energy resources (DER), 2) Providing cheap and fast flexibility services for system operators (transmission and distribution) improving reliability and aiding a larger integration of renewable energy sources in the generation mix, and 3) Boosting economic efficiency of the electricity markets [1]. Nonetheless, BTM flexibility aggregation has its own challenges such as uncertainty in BTM flexibility, aggregator's role in the market, market policy and optimization tools for simulating and evaluating different products, services and markets in which an aggregator may participate [2].

This project is funded jointly by the University of Adelaide industry-PhD grant scheme and Watts A/S, Denmark. We would like to thank Sahand Karimi-Arpanahi and Nam Trong Dinh for their valuable discussions regarding this paper.

For making optimal ordering decisions in wholesale electricity markets, an aggregator must consider the uncertainty surrounding flexibility and wholesale prices as well as the nature of the flexible devices itself. Also, wholesale electricity markets are generally divided into day ahead markets (DAM) for scheduling generators for the next day and real-time/ancillary services markets to account for supply and demand mismatch. By participating in both markets, an aggregator can minimize costs compared with participation in DAM only [3]. This is because higher prices and penalties are applicable in real time markets, allowing the aggregator to hedge across these markets. Hence, most of the literature, comprehensively reviewed in [4], apply stochastic optimization on multi-market aggregator problems to manage risk of aggregators under price and flexibility uncertainty. However, it would also be fruitful to consider the temporal characteristics of prosumer loads such as uninterruptible loads (washing machine, dryer, dishwasher) and batteries (EV and residential). The latter can degrade faster due to charge and discharge cycles at high power for short duration of time.

The European DAM, a.k.a. Elspot, allows participants to submit different order types such as hourly orders and block orders. An order is defined as a certain volume of energy bought/sold (offered/bid) at a certain price or price curve specified by the market participant for a certain duration. For hourly orders, volume is committed for a single hour only, whereas in **regular block order**, the same volume is committed for multiple consecutive hours. Block orders cannot be partially accepted; they must be accepted for the whole duration and hence, can represent the characteristics of certain sources of BTM flexibility (as stated above) and even unit commitment characteristics (UC) of thermal generators. Nonetheless, very little attention has been paid to them in the literature [5]. This is partially due to the combinatorial nature of these problems, making them computationally tedious to solve.

The current state-of-the-art around block orders includes brute force models, where all the orders are explicitly provided to the optimization problem to solve [6]. To make it more tractable in some studies, the number of combinations/orders that can be placed is explicitly reduced [7], [8]. To the best of our knowledge, the only attempt at developing a non-brute force or non-explicit model for block orders is reported in [5].

They modeled different types of block orders by specifying a limit on the number of block orders that can be placed by a market participant for a thermal generator. Moreover, the above studies mainly focused on thermal generators, thus are unsuitable for flexibility aggregators. Therefore, there exists a gap in literature regarding block order based optimal bidding engines for flexibility aggregators.

To address this gap, we developed a novel mixed-integer bi-linear program formulation for a flexibility aggregator operating in Denmark to optimally offer BTM flexibility across all combinations of hourly and regular block orders in the Elspot market. We compared the performance of our model with the brute force model specified in [6]. In addition, an appropriate flexibility model is developed for the aggregator considering the nature of the flexibility sources. Through extensive simulation studies, we show that our proposed formulation computationally outperforms the brute force model while achieving the same optimal results.

The rest of the paper is structured as follows. Section II provides insights about the flexibility procurement for this aggregator. We then introduce our optimal problem formulations in Section III. The scenarios used for testing and validating the developed formulations are discussed in Section IV, and the corresponding results are presented in Section V. Finally, we draw conclusions and outline future work in Section VI.

II. FLEXIBILITY PROCUREMENT

In this study, we assume that flexibility is procured from prosumers by using indirect load control strategy [9] wherein prosumers react to real-time price (RTP) signal sent by an aggregator. This is done to ensure prosumer autonomy is maintained. Flexibility procurement, thus, is divided into two components as described below.

A. Flexibility Model

Based on the products specified in I, BTM sources can be categorized as block order BTM and non-block order BTM. The former includes sources such as EVs and residential batteries, where it is more beneficial to operate them for longer duration at same power (or energy) to lessen battery degradation. The latter contains thermal loads since they can only be flexible for a limited time before influencing the comfort of the prosumers. For the maximum benefit of the prosumers, PV is assumed non-curtable, i.e., either used by the prosumers (may include battery storage) or sold to the grid. The adopted flexibility model has two main components; a flexibility profile and a cross elasticity matrix. Let $\mathcal{T} = \{1, 2, \dots, T\}$ be the set of indices representing the operational hours, and $T = \|\mathcal{T}\|$ be the number of operational hours. The flexibility profile $F^{\max} \in \mathbb{R}_-^{T \times 1}$ represents the maximum amount of flexibility that can be obtained at time interval t in MWh, which depends on the weather conditions, diurnal factors and so on. Please note that we are not explicitly integrating these factors in our model since it is out of the scope of this paper. To account for inter-temporal relations (rebound effect) and prosumers' comfort, a cross-elasticity matrix $A \in \mathbb{R}_-^{T \times T}$ is defined. This

is a lower triangular matrix with diagonal elements equal to zero, which means that the flexibility used at time interval t will affect the flexibility in the future intervals and not vice versa. $F \in \mathbb{R}_-^{T \times 1}$ is a vector representing the actual flexibility obtained from the cluster of prosumers at time t . The superscripts hour and block represent the non-block order BTM and block order BTM, respectively. Since the aggregator can only make profit in the DAM by selling, all elements of the above variables are negative according to the Elspot's sign convention. Equations (1a) - (1c) represent the flexibility model used in the optimization.

$$F^{\max, \text{hour}} + A^{\text{hour}} F^{\text{hour}} \leq F^{\text{hour}} \leq 0 \quad (1a)$$

$$F^{\max, \text{block}} + A^{\text{block}} F^{\text{block}} \leq F^{\text{block}} \leq 0 \quad (1b)$$

$$F = F^{\text{hour}} + F^{\text{block}} \quad (1c)$$

B. Prosumers' Responsiveness

Relying on consumers' manual intervention to adjust their load according to price signal is not practical and efficient. Therefore, we assume that a home energy management system (HEMS) exists at the premises to manage communication, monitoring and control while fulfilling the prosumers preferences. Then, the prosumers' responsiveness refers to the price responsiveness of the rational prosumers, i.e., the price paid versus flexibility obtained. For a cluster of prosumers, this can be viewed as the supply curve of the aggregator that shows the cost to provide electricity to the wholesale market.

In general, prosumers responsiveness follows a saturation-like pattern, where little to no flexibility is available at low prices and no extra flexibility can be expected after reaching the maximum limit [10]. Thus, a sigmoid function can represent this pattern as shown in Fig. 1.

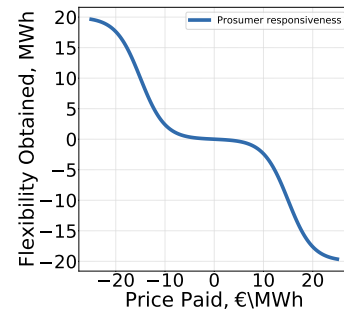


Figure 1. Expected Prosumer's responsiveness to different prices

Here, we use the same price responsiveness curve for a prosumer in all operational hours to simplify the problem, but the curve can be modified for different hours if needed. Let $\lambda^{\text{paid}} \in \mathbb{R}^{T \times 1}$ represent the price paid by the aggregator at each operational hour, a and b are constants associated with prosumer responsiveness and f^{\max} and λ^{\max} denote the knee point flexibility and the corresponding price paid for it, respectively, from a cluster of prosumers for all operational hours.

$$F = -\frac{f^{\max}}{1 + e^{\circ(a+b\lambda^{\text{paid}})}} \quad (2)$$

Equation (2)¹ is a non-convex function when double/single sided. To make the overall optimization problem tractable, this function is linearized by piece-wise linearization (PWL). Let $\mathcal{P} = \{1, 2, \dots, P\}$ be the set of indices representing each piece in the PWL model, where $P = \|\mathcal{P}\|$ is the number of pieces, $\lambda^{\text{PWL}} \in \mathbb{R}^{P+1 \times 1}$ is the list of price breakpoints, $F^{\text{PWL}} \in \mathbb{R}^{P+1 \times 1}$ and $s^{\text{PWL}} \in \mathbb{R}^{P+1 \times 1}$ are the corresponding lists of flexibility and slopes obtained from Eq. (2). To apply a P – piece linearization, the following linear constraints are introduced:

$$\sum_{p \in \mathcal{P}} b_{t,p}^{\text{PWL}} = 1 \quad (3a)$$

$$u_{t,p}^{\text{PWL}} \leq b_{t,p}^{\text{PWL}} \cdot (\lambda_{p+1}^{\text{PWL}} - \lambda_p^{\text{PWL}}) \quad \forall t \in \mathcal{T}, p \in \mathcal{P} \quad (3b)$$

$$\lambda_t^{\text{paid}} = \sum_{p \in \mathcal{P}} (u_{t,p}^{\text{PWL}} + b_{t,p}^{\text{PWL}} \lambda_p^{\text{PWL}}) \quad \forall t \in \mathcal{T} \quad (3c)$$

$$F_t = \sum_{p \in \mathcal{P}} \left[b_{t,p}^{\text{PWL}} \cdot (F_p^{\text{PWL}} - F_1^{\text{PWL}}) + s_p^{\text{PWL}} u_{t,p}^{\text{PWL}} \right] \quad \forall t \in \mathcal{T} \quad (3d)$$

$$-f^{\text{max}} \leq F_t \quad (3e)$$

$$0 \leq \lambda_t^{\text{paid}} \leq \lambda^{\text{max}} \quad (3f)$$

where $b^{\text{PWL}} \in \{0, 1\}^{T \times P}$ is a matrix of binaries, which corresponds to the ‘‘piece’’ that λ_t^{paid} is in at time t , $u^{\text{PWL}} \in \mathbb{R}^{T \times P}$ is a matrix of auxiliary variables used to calculate the value of λ_t^{paid} at time t .

III. OPTIMIZATION PROBLEM FORMULATIONS

This section describes the two optimal offering strategies developed for maximizing aggregator’s profit, while satisfying the market rules and flexibility constraints. An offer is defined by the volume offered (price-independent case), a start time of delivery and the duration of delivery. The optimization model must consider all possible combinations of single-hour order and regular block orders to choose the most profitable ones. These combinations can be modeled by the use of binary variables, where different types of order cannot be placed at a given operational hour. The profit of the aggregator contains two components: revenue from the market and cost of flexibility procurement, both of which are bi-linear, i.e., (price \times volume). This requires developing a mixed-integer bi-linear program (MIBLP), which are NP-hard problems, and that can be solved using modern solvers like Gurobi [11].

In this study, to improve the tractability of the problem, the following assumptions are made: 1) the aggregator is a price taker, and 2) the formulation is deterministic, i.e., the prosumer flexibility and market clearing prices are exactly known at the start of the optimization. We recognize that the flexibility model is highly uncertain and that modeling this uncertainty is critical for developing aggregator’s business model. However, the main purpose of this study being the introduction of a

new way of modeling block orders, we postpone uncertainty modeling to the future.

Based on the above assumptions, the developed optimization models are explained below.

A. Brute Force Model

In this model, all possible combinations of single and block orders are pre-defined for the optimization problem along with the flexibility constraints and the spot price, $\lambda^{\text{spot}} \in \mathbb{R}^{T \times 1}$, from the Elspot market. The optimization problem maximizes aggregator’s profit by selecting the most profitable combination of orders. This approach has been implemented in [5], [7], [8]. Let $\mathcal{H} \in \{0, 1\}^{T \times H}$, $\mathcal{B} \in \{0, 1\}^{T \times B}$ be the set of binary vectors representing combinations of hourly and block orders respectively². H and B are the number of combinations of hourly and block orders, respectively. $V^{\text{hour}} \in \mathbb{R}_+^{H \times 1}$ is the volume offered for each hourly order combination in \mathcal{H} , while $V^{\text{block}} \in \mathbb{R}_+^{B \times 1}$ is the volume offered for each block order combination in \mathcal{B} . $b^{\text{hour}} \in \{0, 1\}^{H \times 1}$ and $b^{\text{block}} \in \{0, 1\}^{B \times 1}$ are two sets of binary vectors encoding which combination of hourly and block orders are active, respectively. Thus, the formulation is as follows,

$$\max_{\Psi_1} \sum_{t \in \mathcal{T}} -F_t \cdot (\lambda_t^{\text{spot}} - \lambda_t^{\text{paid}}) \quad (4a)$$

subject to: Eqs. (1a) – (1c), (3a) – (3f)

$$F_t^{\text{hour}} = \sum_{h=1}^{\|\mathcal{H}\|} V_h^{\text{hour}} \mathcal{H}_{t,h} \quad \forall t \in \mathcal{T} \quad (4b)$$

$$F_t^{\text{block}} = \sum_{b=1}^{\|\mathcal{B}\|} V_b^{\text{block}} \mathcal{B}_{t,b} \quad \forall t \in \mathcal{T} \quad (4c)$$

$$\sum_{h=1}^{\|\mathcal{H}\|} b_h^{\text{hour}} \mathcal{H}_{t,h} + \sum_{b=1}^{\|\mathcal{B}\|} b_b^{\text{block}} \mathcal{B}_{t,b} \leq 1 \quad \forall t \in \mathcal{T} \quad (4d)$$

where $\Psi_1 = \{F, F^{\text{hour}}, F^{\text{block}}, V^{\text{hour}}, V^{\text{block}}, b^{\text{hour}}, b^{\text{block}}, \lambda^{\text{paid}}\}$ is the set of decision variables to be optimized, Eq. (4a) is the profit of the aggregator, Eqs. (4b) and (4c) obtain the vector of flexibility ordered at each operational interval for hourly and block orders, respectively. Finally, Eq. (4d) ensures that at a given operational interval, the maximum of one order is active out of all the combinations in \mathcal{H} and \mathcal{B} .

B. Proposed Formulation

The new formulation is based on the fact that the only difference between regular block orders and hourly orders is the equal volume for a minimum duration of three intervals. Thus,

$$\begin{aligned} {}^2\mathcal{H} &= \left\{ \{1, 0, 0, \dots, 0, 0, 0\}, \{0, 1, 0, \dots, \right. \\ &\quad \left. 0, 0, 0\}, \dots, \{0, 0, 0, \dots, 0, 1, 0\}, \{0, 0, 0, \dots, 0, 0, 1\} \right\} \\ \mathcal{B} &= \left\{ \{1, 1, 1, 0, \dots, 0, 0, 0\}, \{0, 1, 1, 1, 0, \dots, \right. \\ &\quad \left. 0, 0, 0\}, \dots, \{0, 1, 1, 1, \dots, 1, 1, 1\}, \{1, 1, 1, 1, \dots, 1, 1, 1\} \right\} \end{aligned}$$

¹Please note that \circ symbol represents element-wise or Hadamard operation.

it is sufficient to track duplication of orders consecutively to define a block order.

b_t^{order} signifies whether an hourly or block order is placed at time t or not. Let $b^{\text{duplicate}} \in \{0, 1\}^{(T+1) \times 1}$ be a binary vector indicating whether the previous order is duplicated or not, and $u^{\text{active}} \in [0, 1]^{(T+1) \times 1}$ be an auxiliary vector used to enforce the minimum duration of three hours for a block order based on the Elspot rules. The above variables are indexed using the index set $\{0\} \cup \mathcal{T}$. The values of $b_0^{\text{order}}, b_0^{\text{duplicate}}, u_0^{\text{active}}$ and u_1^{active} are redundant and set to zero, and are used to generalize the constraints. $u^{\text{hour}}, u^{\text{block}} \in [0, 1]^{T \times 1}$ are two vectors of binary variables encoding hourly and block orders status at all operational intervals, respectively. The start of a block order is tracked using a binary variable, $u^{\text{start}} \in [0, 1]^{T \times 1}$, which is set to one only if there is a transition from a non-block order to a block order. It is noted that the above three binary variables are relaxed to real variables. This is because the logical constraints mentioned in the formulation below are reformulated into MILP constraints as shown in [12], which ensures that the solution of these variables are always at the boundary.

$b^{\text{vol},+} \in \{0, 1\}^{T \times 1}$ and $b^{\text{vol},-} \in \{0, 1\}^{T \times 1}$ are binary variables used to enforce $F_{t-1} = F_t$, if both are equal to 1, by using *Big M* formulation. Figure 2 shows the decision tree implemented via the logical constraints in the proposed formulation. The actual interpretations of each state are explained in Table I.

b_t^{order}	$b_t^{\text{duplicate}}$	Interpretation
0	0	No order is placed
1	0	Some order is placed
1	1	Previous order is duplicated
0	1	Illegal state

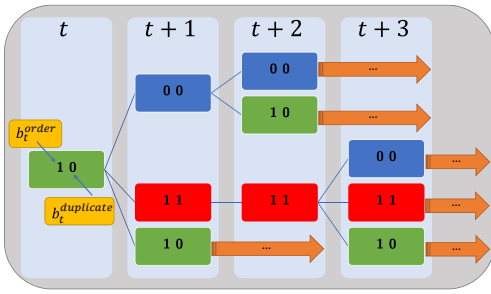


Figure 2. The implemented decision tree of the proposed formulation

Thus, the optimization problem can be expressed as follows,

$$\max_{\Psi_2} \sum_{t \in \mathcal{T}} -F_t \cdot (\lambda_t^{\text{spot}} - \lambda_t^{\text{paid}}) \quad (5a)$$

subject to: Eqs. (1a) – (1c), (3a) – (3f)

$$b_0^{\text{order}}, b_0^{\text{duplicate}}, u_0^{\text{active}}, u_1^{\text{active}} = 0 \quad (5b)$$

$$u_t^{\text{active}} = b_{t-1}^{\text{duplicate}} \wedge \neg b_{t-2}^{\text{duplicate}} \quad \forall t \in \mathcal{T} - \{1\} \quad (5c)$$

$$\neg b_{t-1}^{\text{order}} \wedge b_t^{\text{duplicate}} = 0 \quad \forall t \in \mathcal{T} \quad (5d)$$

$$\neg b_t^{\text{order}} \wedge b_t^{\text{duplicate}} = 0 \quad \forall t \in \mathcal{T} \quad (5e)$$

$$u_t^{\text{active}} \leq b_t^{\text{duplicate}} \leq u_t^{\text{active}} + 1 \quad \forall t \in \mathcal{T} \quad (5f)$$

$$u_t^{\text{start}} = \neg b_t^{\text{duplicate}} \wedge b_{t+1}^{\text{duplicate}} \quad \forall t \in \mathcal{T} \quad (5g)$$

$$u_t^{\text{start}} = 0 \quad \forall t \in \{T-1, T\} \quad (5h)$$

$$u_t^{\text{block}} = (b_t^{\text{order}} \wedge b_t^{\text{duplicate}}) \vee u_t^{\text{start}} \quad \forall t \in \mathcal{T} \setminus \{T\} \quad (5i)$$

$$u_t^{\text{hour}} + u_t^{\text{block}} = b_t^{\text{order}} \quad \forall t \in \mathcal{T} \quad (5j)$$

$$b_t^{\text{duplicate}} = b_t^{\text{vol},+} \wedge b_t^{\text{vol},-} \quad \forall t \in \mathcal{T} \quad (5k)$$

where, $\Psi_2 = \{F, F^{\text{hour}}, F^{\text{block}}, b^{\text{order}}, b^{\text{duplicate}}, b^{\text{vol},+}, b^{\text{vol},-}, \lambda^{\text{paid}}, u^{\text{active}}, u^{\text{block}}, u^{\text{hour}}, u^{\text{start}}\}$ is the set of decision variables in the optimization problem. Equation (5b) initializes all the binary and relaxed binary variables to zero at $t = 0$. Equation (5c) is used to check if a block order is within the minimum duration constraint or not. Equation (5f) enforces an active block order if inside minimum duration. Equation (5k) is used to evaluate and enforce the equal volume constraint for the block orders. Equations (5d)-(5e) block the illegal sequences mentioned above. Equation (5g) encodes the u_t^{start} , while Eq. (5h) prevents block orders starting at times when minimum duration requirement cannot be satisfied. Also note that this formulation can model *profile block orders* [13]) as well, by dropping Eq. (5k) and its associated *Big M* formulation.

IV. SIMULATION SETUP

To compare our three models, we use multiple scenarios of flexibility and prosumer responsiveness based on real Elspot price data. Denmark was chosen as the region of operation of the aggregator.

A. Flexibility scenarios

As discussed in Section II-A, one flexibility profile and cross-elasticity model is needed for block orders and non-block orders per scenario. Prosumers' flexibility mainly depends on factors such as seasonal and geographical variations, diurnal factors (time of day), and occupant behavior, of which seasonal variations have the highest effect as reported in [14]. This study was used as a basis to design cases for non-block order profiles for different seasons and diurnal factors as shown in 3(a). In case of block order flexibility, seasonal variations were not considered and the names in Fig. 3(b) are the hourly order profiles with which these block order profiles are paired. Since these include EV, the flexibility would be maximum when prosumers are at home (7 PM to 4 AM). Hence, eight profiles and cross-elasticity matrices (CEM) were generated as scenarios, two for each season (e.g., *Autumn1, Autumn2*). The profiles and CEM were generated

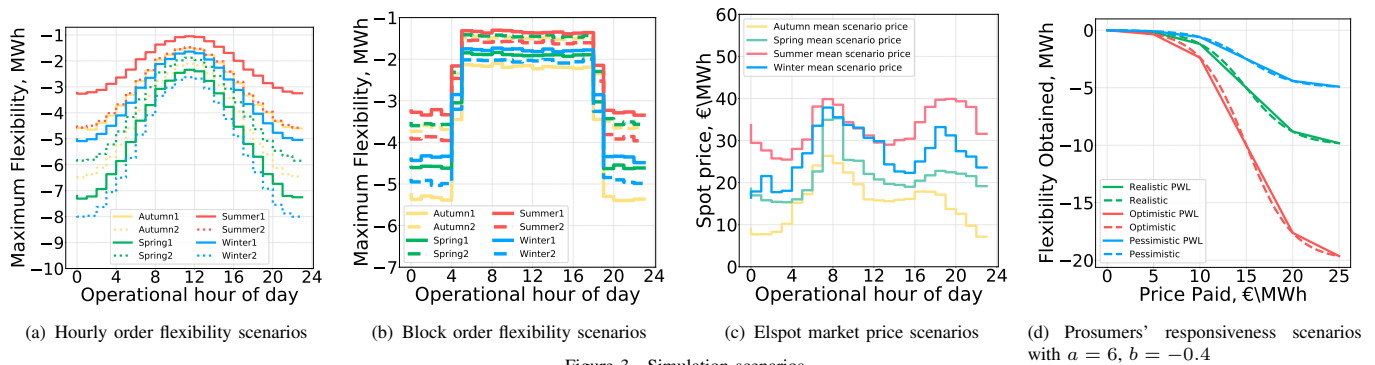


Figure 3. Simulation scenarios

using log-normal distribution to ensure one-sided profiles and matrix elements (selling only) as explained in Section II-A. Please note that proper scenarios can be generated using historical values based on the prosumers' reaction at different times of a day and seasons but that is outside the scope of this study.

Additionally, for each profile and cross-elasticity matrix pair, two Elspot price scenarios (*Energy Price 1*, *Energy Price 2*) were considered while simulating the cases. These prices were chosen from the DK1 region of Denmark [15], such that the prices belonged to the months of the corresponding season of the profile in the year 2021. Figure 3(c) shows the average Elspot prices for each season (four scenarios per season). Thus, 16 scenarios combining prosumer flexibility and Elspot prices were generated in total. $T = 24$, $B = 253$, $H = 24$, $M = 40$, $P = 5$ are the parameters used for simulation.

B. Prosumers' responsiveness scenarios

As discussed in Section II-B, Eq. (2) is used to model prosumer responsiveness where a and b can be viewed as shaping parameters while f limits the maximum flexibility. The average electricity spot prices between 2010 to 2020 for DK1 region for Elspot market was found to be €35.24/MWh. The function specified in Eq. (2) represents the cost curve of the aggregator to activate flexibility and the "knee point" of this is at the price of €25.00/MWh. This is in the aggregators' interest as it would be more likely to generate profit from the wholesale market. Also, it provides a decent incentive for prosumers to participate in the flexibility aggregation program. Additionally, based on the maximum available flexibility, three scenarios of prosumers' clusters are simulated; *Optimistic*, *Realistic* and *Pessimistic* with $f = 20, 10, 5$, respectively. Finally, they are PWL approximated using the $\lambda^{\text{PWL}} = [0, 5, 10, 15, 20, 25]$, as shown in Fig. 3(d).

Thus, we consider a total of 48 scenarios by combining the 16 scenarios explained in Section IV-A and the three prosumers' responsive scenarios discussed here.

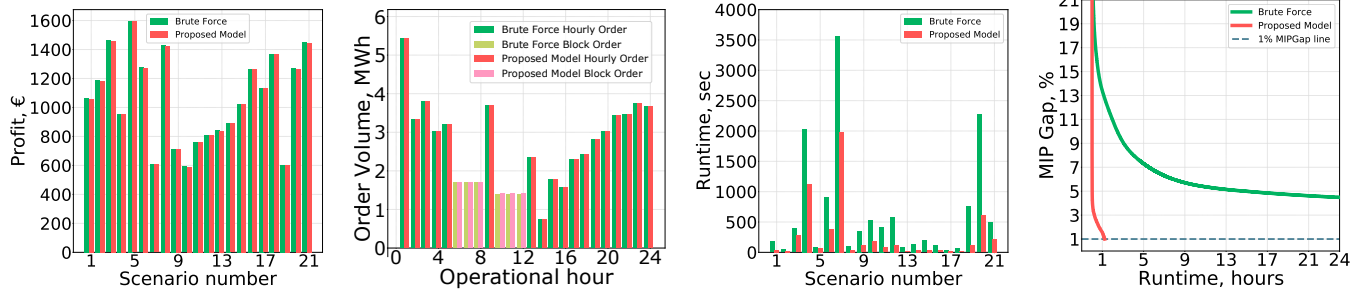
V. SIMULATION RESULTS

The scenarios described in Section IV are simulated for the optimization formulations presented in Sections III-A and III-B. The simulations were run on a Windows machine

with an Intel® i7 8-core processor and 8 GB RAM using Python 3.8.8. Gurobi® was selected as the solver for these simulations because it can solve to global optimum solutions for MIBLP and has a well-documented Python API [11]. As mixed-integer programming (MIP) problems are NP-hard, two stopping criteria were used for the simulations conducted; a *MIP gap* of 1% and a *time limit* of 3600 sec, whichever occurs first. Thus, the solutions obtained for all scenarios are divided into two categories, namely acceptable (1% *MIP gap* within 3600 sec) or time cut-off (runtime exceeding 3600 sec) solutions. We observe that the proposed model could solve *eight* more cases than brute force model within one hour. Also, all 21 common cases were acceptably (within 1% *MIP gap*) solved by brute force and proposed models. Thus, these 21 cases are used to make comparisons between the two models.

It is necessary to validate the performance of the models proposed in Section III-B using the brute force model from Section III-A to ensure the correctness of the proposed model. Figure 4(a) shows the profit obtained (objective value) in the 21 common scenarios for each model. It can be seen that the objective values are about the same for all the cases. Additionally, Fig. 4(b) shows the orders placed in the wholesale market by the two models for a particular scenario. It can be clearly seen that exactly the same orders are placed in the market by them, validating the proposed model. Additionally, for all the acceptable cases of each model, block orders were placed in the market. This shows that there exists opportunities for aggregators to benefit more by these types of orders, and modeling these is useful, especially in intervals, where thermal load flexibility is unavailable.

In terms of computation speed, the proposed model outperforms the brute force formulation by 240% with average runtimes of 263.30 and 637.08 sec, respectively. This was expected since MIP computational performance get exponentially worse with the increasing number of binary variables. Additionally, one of the *time cut-off* cases was run for 24 hours for both methods and their *MIP gaps* were compared in Fig. 4(d). It can be clearly seen that our proposed approach reaches the 1% *MIP gap* in about 70 minutes whereas the brute force formulation is approaching 4.5% *MIP gap* after 24 hours, demonstrating the superiority of our proposed formulation. It also highlights that for certain scenarios, the brute force



(a) Objective value comparison for acceptable scenarios (b) Order placed for (*Spring1, Realistic, Energy price 1*) scenario (c) Runtime comparison for acceptable scenarios (d) *MIP gap* vs. *runtime* comparison for (*Winter1, Realistic, Energy Price 1*) scenario

Figure 4. Simulation results for different scenarios

method may not be able to solve the problem within 24 hours (which is needed) for the DAM.

For the following analyses, we use results from the proposed model as it solves more scenarios. The average profits obtained for the *optimistic*, *realistic* and *pessimistic* cluster are €1166.81, €1062.84, and €922.60, respectively (per day). As expected, the aggregator makes more profit in the case of *optimistic* cluster than the *realistic* and *pessimistic* clusters. The average profit considering all acceptable cases is €1050.52. Comparing this method with sole single orders may be unfair since they would not correctly represent the rebound effect and temporal characteristics of the flexibility sources in question. Thus from these results, block orders show potential for accruing profit for aggregators.

VI. CONCLUSION AND FUTURE WORK

In this paper, we presented a novel approach to optimally offer BTM flexibility in the Elspot market, considering hourly and regular block orders. We compared the proposed formulation against a pre-existing brute force model, while considering a generic flexibility model with inter-temporal dependencies. We generated 48 scenarios that consider seasonal effects and diurnal variations on flexibility, prosumer clusters with different price responsiveness and different spot prices. It was found that the proposed approach was correct and about 2.4 times faster than the brute force method. We also observed that this multi-product business model has potential to generate profit (€1050.52 per day on average) for the aggregator. As part of the future work, we plan to incorporate other types of block orders and flexi-order in the proposed model and to analyze their potential benefit for the aggregator. To deal with variable flexibility and electricity prices, we plan to incorporate predictions and associated uncertainty of some factors influencing flexibility (e.g., weather and energy prices) in our formulations in the future. We also plan to making the formulation faster allowing us to incorporate more products/markets within it.

REFERENCES

- [1] S. Burger, J. P. Chaves-Ávila, C. Battle, and I. J. Pérez-Arriaga, "A review of the value of aggregators in electricity systems," *Renewable and Sustainable Energy Reviews*, vol. 77, no. February 2016, pp. 395–405, 2017. [Online]. Available: <http://dx.doi.org/10.1016/j.rser.2017.04.014>
- [2] M. Brolin, "Aggregator trading and demand dispatch under price and load uncertainty," in *2016 IEEE PES Innovative Smart Grid Technologies Conference Europe (ISGT-Europe)*, 2016, pp. 1–6.
- [3] J. Iria, F. Soares, and M. Matos, "Optimal bidding strategy for an aggregator of prosumers in energy and secondary reserve markets," *Applied Energy*, vol. 238, pp. 1361–1372, 2019. [Online]. Available: <https://www.sciencedirect.com/science/article/pii/S0306261919301928>
- [4] Ö. Okur, P. Heijnen, and Z. Lukszo, "Aggregator's business models in residential and service sectors: A review of operational and financial aspects," *Renewable and Sustainable Energy Reviews*, vol. 139, no. January, p. 110702, 2021. [Online]. Available: <https://doi.org/10.1016/j.rser.2020.110702>
- [5] M. Karasavvidis, D. Papadaskalopoulos, and G. Strbac, "Optimal offering of a power producer in electricity markets with profile and linked block orders," *IEEE Transactions on Power Systems*, pp. 1–1, 2021.
- [6] S.-E. Fleten and T. K. Kristoffersen, "Stochastic programming for optimizing bidding strategies of a Nordic hydropower producer," *European Journal of Operational Research*, vol. 181, no. 2, pp. 916–928, sep 2007. [Online]. Available: <https://linkinghub.elsevier.com/retrieve/pii/S0377221706005807>
- [7] A. Schledorn, D. Guericke, A. N. Andersen, and H. Madsen, "Optimising block bids of district heating operators to the day-ahead electricity market using stochastic programming," *Smart Energy*, vol. 1, p. 100004, 2021. [Online]. Available: <https://doi.org/10.1016/j.segy.2021.100004>
- [8] E. Faria and S. E. Fleten, "Day-ahead market bidding for a Nordic hydropower producer: Taking the Elbas market into account," *Computational Management Science*, vol. 8, no. 1-2, pp. 75–101, 2011.
- [9] A. R. Jordehi, "Optimisation of demand response in electric power systems, a review," *Renewable and Sustainable Energy Reviews*, vol. 103, no. December 2018, pp. 308–319, 2019. [Online]. Available: <https://doi.org/10.1016/j.rser.2018.12.054>
- [10] G. De Zotti, S. A. Pourmousavi, J. M. Morales, H. Madsen, and N. K. Poulsen, "Consumers' Flexibility Estimation at the TSO Level for Balancing Services," *IEEE Transactions on Power Systems*, vol. 34, no. 3, pp. 1918–1930, 2019.
- [11] *Gurobi Optimizer Reference Manual*. Gurobi, 2021.
- [12] E. M. Wolff, U. Topcu, and R. M. Murray, "Optimization-based trajectory generation with linear temporal logic specifications," in *2014 IEEE International Conference on Robotics and Automation, ICRA 2014, Hong Kong, China, May 31 - June 7, 2014*. IEEE, 2014, pp. 5319–5325. [Online]. Available: <http://dx.doi.org/10.1109/ICRA.2014.6907641>
- [13] (2022) Day-ahead trading order types. [Online]. Available: <https://www.nordpoolgroup.com/en/trading/Day-ahead-trading/Order-types/>
- [14] A. Balint and H. Kazmi, "Determinants of energy flexibility in residential hot water systems," *Energy and Buildings*, vol. 188–189, pp. 286–296, 2019. [Online]. Available: <https://doi.org/10.1016/j.enbuild.2019.02.016>
- [15] (2022) Nord pool historical market data. [Online]. Available: <https://www.nordpoolgroup.com/en/historical-market-data/>